



Airport Lighting Equipment

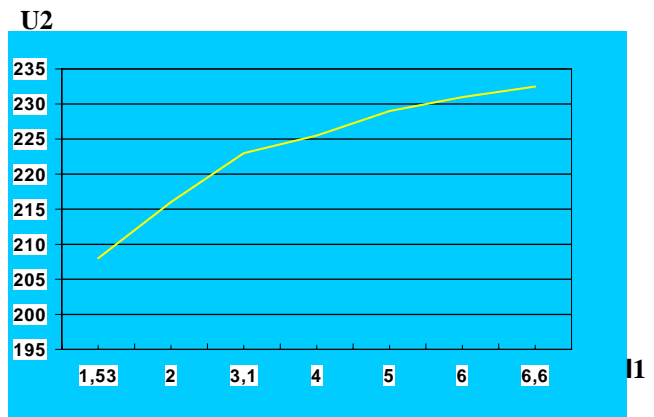
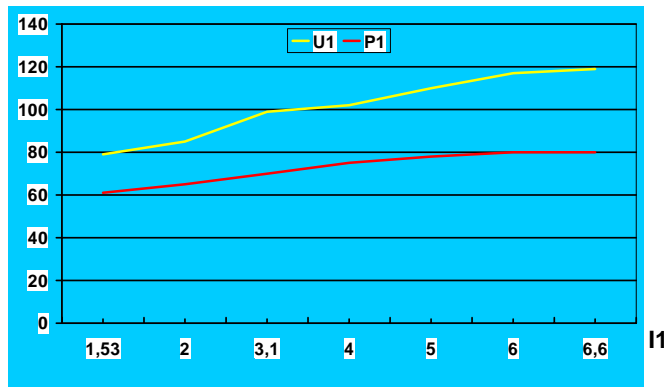
CURRENT TO CONSTANT VOLTAGE IKS TYPE 29.115.PSU/3

Type IKS is a fully encapsulated constant voltage source with input from a current regulated series circuit. Based on a special magnetic circuit. Type IKS is especially suitable for the supply of fluorescent tubes.

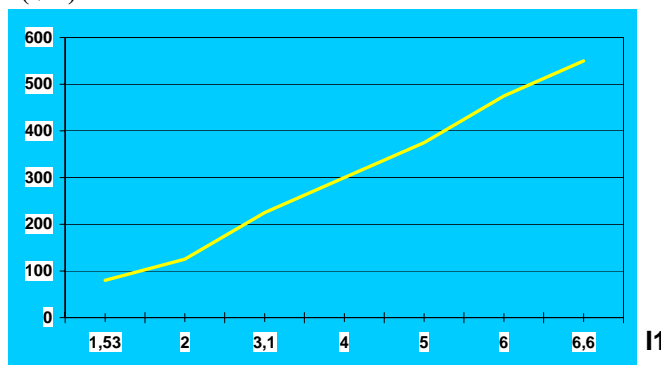
With an input between 3,5A and 6,6A RMS (all wave forms), the output voltage will be kept constant 220V \pm 10%

Caused by the wide limits for the primary current, the efficiency and power factor will vary as a function of load and primary current.

The following functions valid for the IKS loaded with 2x36W uncompensated fluorescent lamps.



S1
(VA)



Special Conditions

1. I2, short circuit \leq 1,9A
2. U2, open circuit app. 250V

Know-how within:

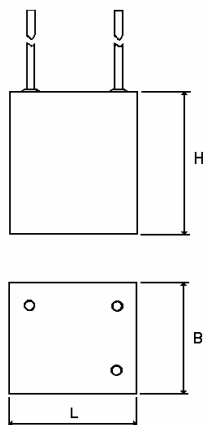
- Engineering and design of visual aids
- Manufacture, installation and maintenance

ELECTRICAL DATA

Primary: $3,5A \leq I \leq 6,6A$
Secondary: $220V \pm 10\%$
Max load 80W/90VA

MECHANICAL DATA

W x L x H: 114 x 122 x 185mm
Weight: app. 10kg



Codes for Primary and Secondary

	0	1	2	3	4	5	6	7
P PRIMARY CABLE	2 x 0,8 m 1 x 6mm ² No conn.	2 x 0,8 m 1 x 6mm ² FAA conn. (male+female)	2 x 0,8 m 1 x 6mm ² + 2,5 mm ² screen No conn.	2 x 0,8 m 1 x 6mm ² + 2,5 mm ² screen FAA conn. (male+female)	2 x 0,8 m 1 x 6mm ² + 6mm ² screen No conn.			
S SECON- DARY CABLE	1 x 0,8 m 2 x 2,5 mm ² No conn.	1 x 1,2 m 2 x 2,5mm ² FAA conn. (female)	1 x 1,6 m 2 x 2,5 mm ² No conn.	1 x 0,8 m 2 x 2,5 mm ² FAA conn. (female)	1 x 1,0 m 2 x 2,5 mm ² No conn.	1 x 2,2 m 2 x 2,5 mm ² (AMP conn. included)	1 x 1,2 m 2 x 2,5 mm ² Spec. FAA Female (2 x Ø 3,99)	1 x 1,2 m 2 x 1,5mm ² FAA conn. (female)



INDUPERM ^A/_S

Transformers & Airfield Lighting

Københavnsvej 1 • DK – 4800 Nykøbing F • Denmark

Phone +45 54860200 • Fax +45 54860389

Induperm@induperm.dk • <http://www.induperm.dk>